

**Venue of the conference: Semmelweis University, Basic Medical Science Center**  
**Address: 1094 Budapest, Tűzoltó street 37-47.**



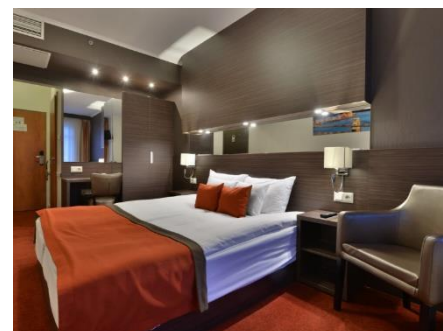
You can reach the conference venue from the following hotels easily by walking or by public transport. Please kindly note that no reservation or block booking has been made, conference participants are responsible for making their own reservation.

Recommended hotels:

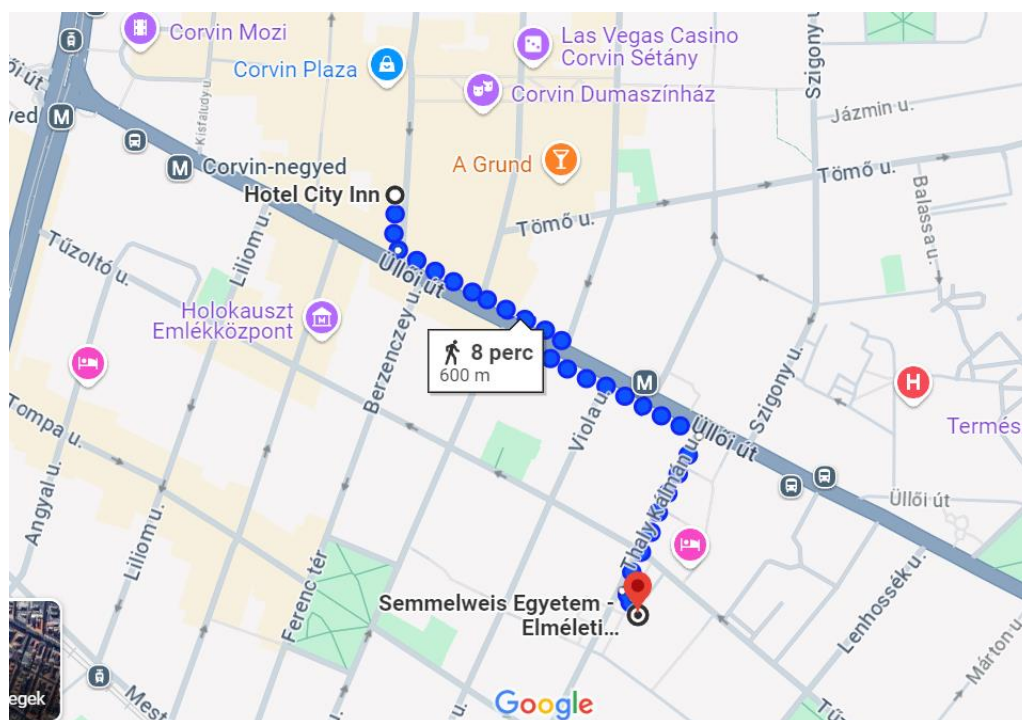
1. Hotel City Inn (page 2)
2. Mercure Budapest Korona (page 3)
3. Akeah Verdi Budapest (page 4)
4. Ibis Budapest Centrum (page 5)

## 1. Hotel City Inn (4 stars)

- <https://cityinn.hu/>
- 1082 Budapest, Futó street 55.
- ~ 80 EUR (person/night)



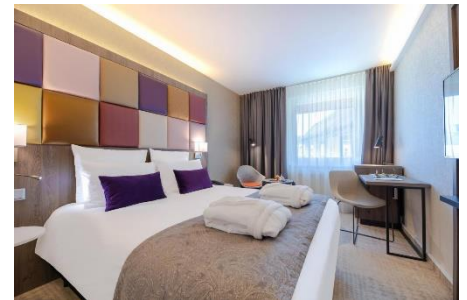
### d. directions, estimated time



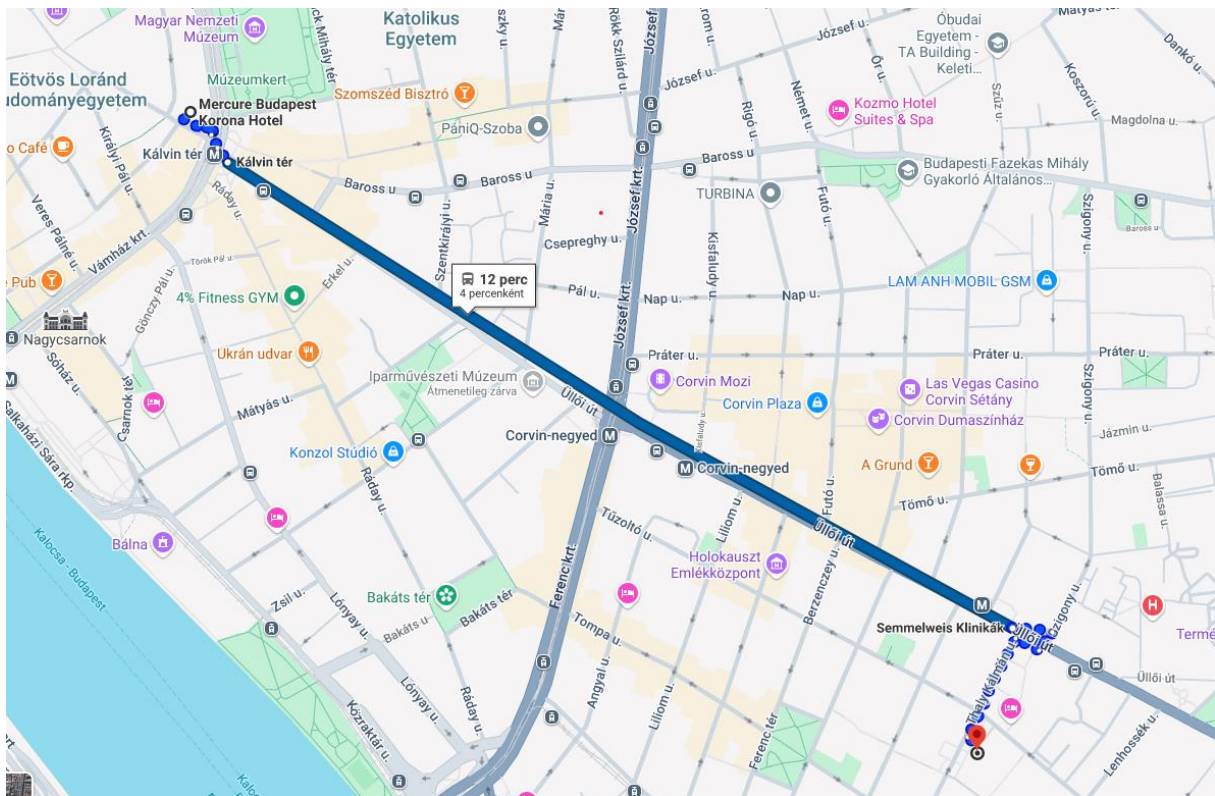
Hotel City Inn is an 8-minute walk from the Semmelweis Basic Medical Science Center via Üllői Street and Thaly Kálmán Street.

## 2. Mercure Budapest Korona (4 stars)

- <https://mercurekorona.hu-budapest.com/en/>
- 1053 Budapest, Kecskeméti Street 14.
- ~ 140 EUR (person/night)



### d. direction, estimated time



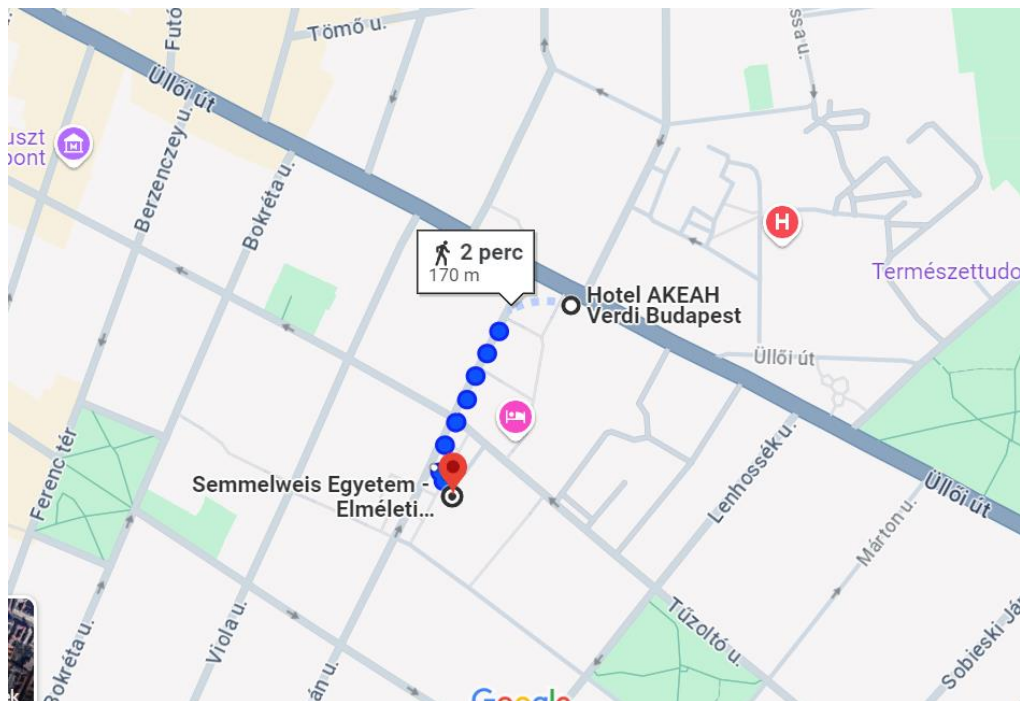
Semmelweis Basic Medical Science Center is reachable from Mercure Hotel Korona via metro line M3 in 10-15 minutes. You need to get on to metro line M3 at Kálvin square in the direction of Kőbánya-Kispest. Ride 3 stops and get off at Semmelweis Klinikák. From there, it is a 5-minute walk straight on Thaly Kálmán street until you reach the University.

### 3. Akeah Verdi Budapest (4 stars)

- <https://www.akeah.com/en/>
- 1096 Budapest, 89 Üllői Street
- ~ 70/80 EUR (person/night)



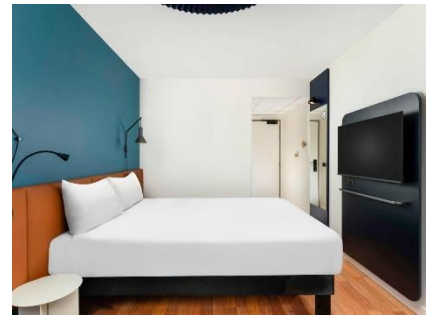
- directions, estimated time



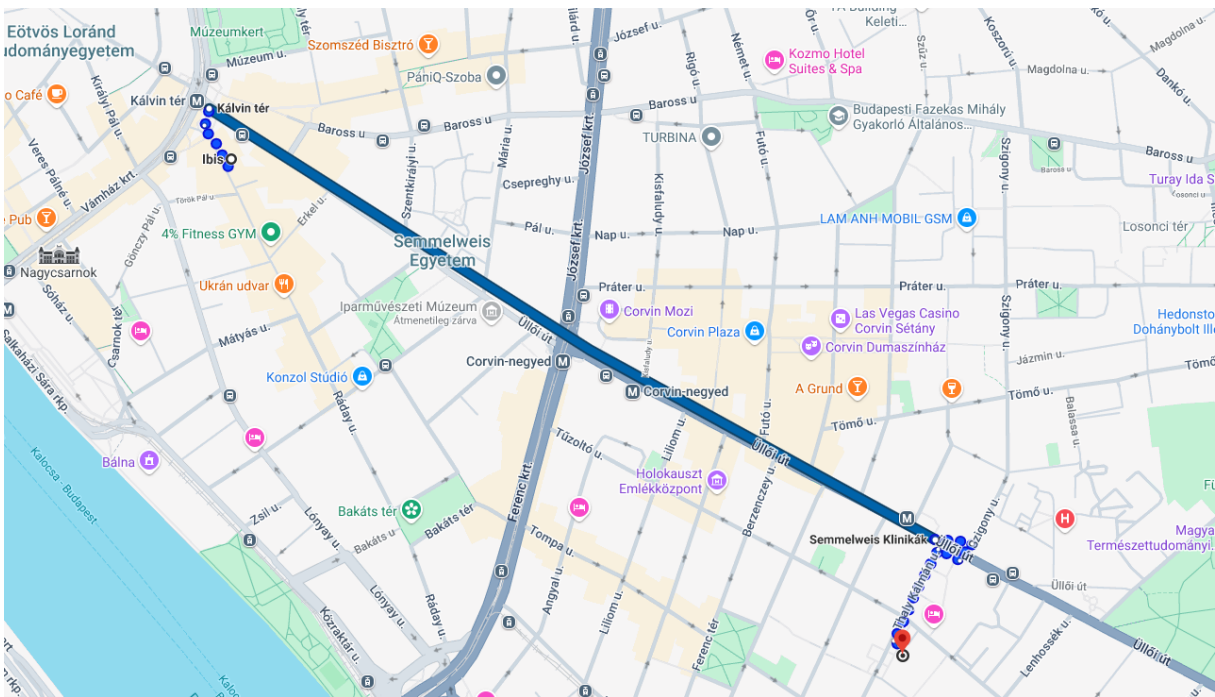
Hotel AKEAH Verdi Budapest is a 3 minute walk from the Semmelweis Basic Medical Science Center via Thaly Kálmán Street.

#### 4. Ibis Budapest Centrum (4 stars)

- <https://all.accor.com/hotel/2078/index.en.shtml>
- 1092 Budapest, Ráday utca 6.
- ~ 60/70 EUR (person/night)



#### d. directions, estimated time



Semmelweis Basic Medical Science Center is reachable from Ibis Budapest Centrum via metro line M3 in 10-15 minutes. You need to enter M3 at Kálvin square in the direction of Kőbánya-Kispest, ride 3 stops and get off at Semmelweis Klinikák. From there, it is a 5-minute walk straight on Thaly Kálmán street until you reach the University.